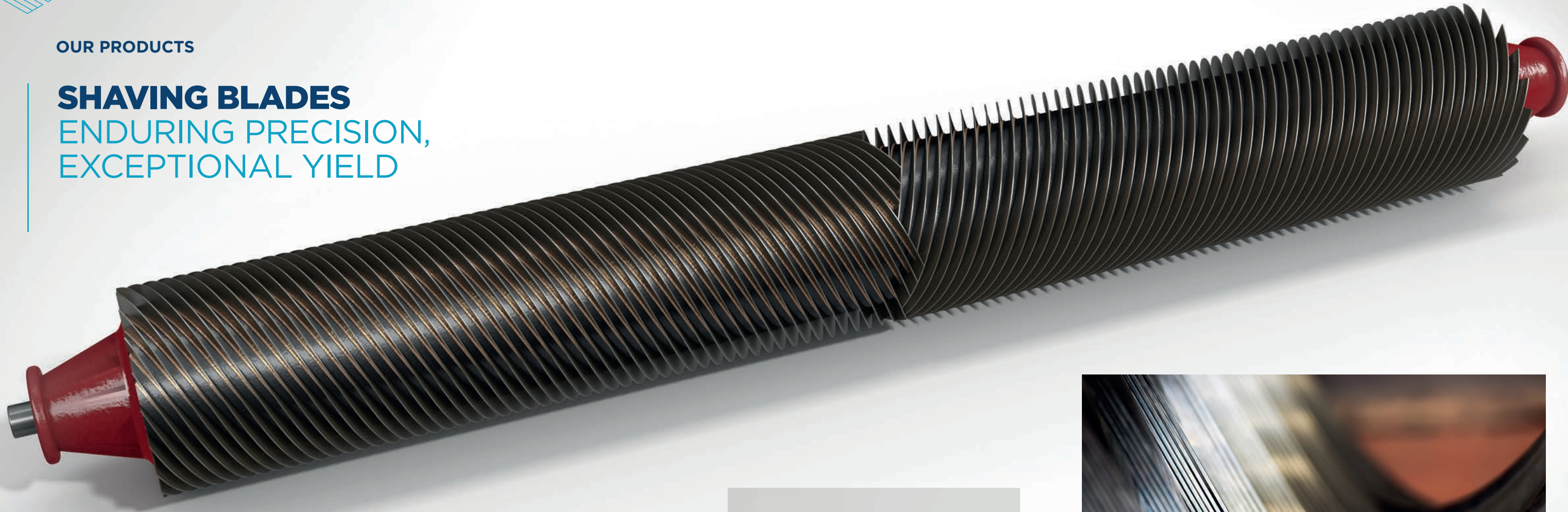




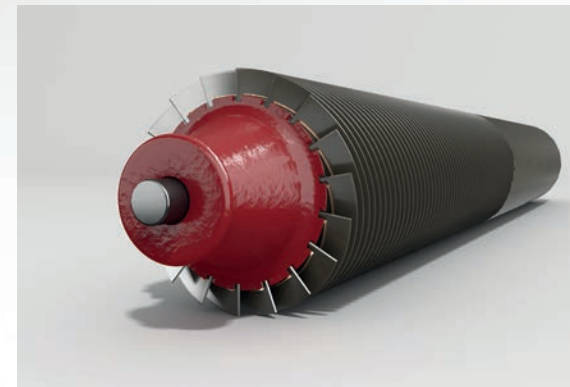
OUR PRODUCTS

SHAVING BLADES

ENDURING PRECISION,
EXCEPTIONAL YIELD



EXAMPLE OF FULL CYLINDER WITH LEFT HAND AND RIGHT HAND BLADE SET, MEETING IN THE MIDDLE



Our precision-made shaving blades consistently provide the highest quality raw material yield-to-blade ratio. As well as excellent performance, customers testify that they are easy to install and remove, giving them high quality shaving to the finest of finishes. That's exactly why we design them the way we do.

USE
Available as standard in 2.1mm and 2.5mm thickness, these blades will work for all your wet and dry leather shaving. We make blades for every brand of shaving machine, usually available from our extensive stock, which can be quickly and easily dispatched.

UNIQUE DESIGN FEATURES
When re-blading, the closely controlled geometry and 'soft bottom' flexibility ensures blades fit precisely into the cylinder groove without inducing unnecessary stress, often a feature of lower cost products.

We understand the perfect overall thickness and finish of your leather has an impact on downstream costs such as chemical processing and finishing time. The Hardy helical-shaped shaving blades consistently provide the best shave for your leather, giving you the best yield for an absolute low cost.

EXCEPTIONAL QUALITY AS STANDARD

- Hardy shaving blades are manufactured to exacting standards and quality control measures, including continuous in-process inspection.
- We use the highest quality raw material to optimise durability, toughness and hardness for specific applications.

- Our precision engineered blades mean enduring quality in repeatable geometry using PLC controlled production processes.
- All batches are uniquely stamped and fully traceable, from steel mill to shipment.
- Global exports are robustly packaged to protect the integrity of our blades.
- Many products are available from local partners, saving you time and cost.
- Ex-stock is available on a wide range of products.
- Outstanding customer care throughout, from enquiry to after-sales.